

# Bridged Telecom Module

## Description:

The Bridged Telecom Module and Telecom Distribution Module provide telephone distribution services throughout the home or office. This module supports the bridged distribution of any combination of up to four telephone lines to eight locations. In addition, the RJ31X provides security interface and line seizure capability to most security systems.

## Installation: (see Fig. 1)

1. Place the module horizontally.
2. Push the module so the hook and tabs will fall into the rail slots of the enclosure.
3. Slide the module LEFT and the spring fastener will automatically lock the module at the desired position.

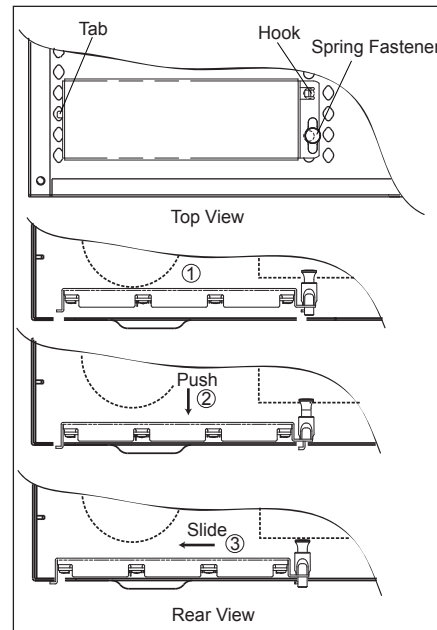


Fig.1

## Operation:

Connect the incoming phone line

The Bridged Telecom Module has a 110 punch-down connector labeled "FROM SOURCE" to support four incoming phone lines from telephone company and distribute up to eight locations. Punch down twisted pairs depending on which line is desired to activate at each of eight locations.

Note - Line#1 = Blue, Line#2 = Orange, Line#3 = Green, Line#4 = Brown.

Example: each IDC (110 connector) represents one area, if you want to activate line #1 at Location #1, simply punch down the twisted pair (Blue/White Blue) to the first IDC. If you want to use a 2-line phone (Line#1 & Line#2) at Location #1, simply punch down twisted pairs (Blue/White Blue & Orange/White Orange) to the first IDC to support 2-line phone. Note - Normally there is only one twisted pair of Cat5/Cat5e cable connects to each IDC connector. (see Fig. 2)

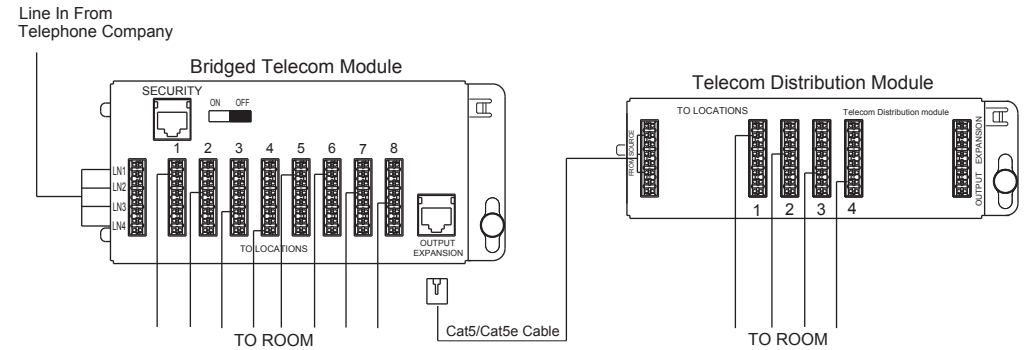


Fig.2

## Connect the Security Interface

The slide switch provides the security interface. Turn the slide switch to "ON" position and connect the RJ-31x cable to RJ-45 jack labeled "SECURITY" on this module. Connect the other end of the RJ-31x cable to the security panel to support automatic dial out capability in case of emergency. Note - Line#1 is preserved for security system. To disable the security function, simply unplug the security jack and turn the switch "OFF".

## Telecom Expansion

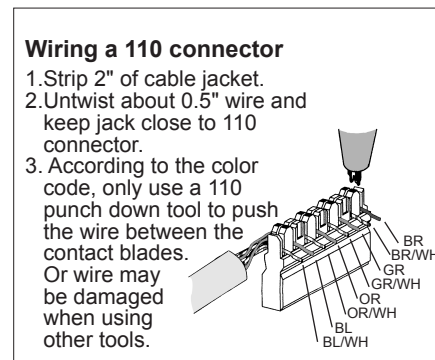
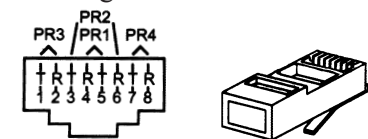
There is a RJ-45 jack labeled "OUTPUT EXPANSION" that will link to another telecom distribution module to support additional four to eight locations.

## Wire installation:

For 110 IDC connector, follow the wire color-code and only use the 110 punch-down tool to push the wire between the contact blades (see Fig. 3). For RJ45 plug, follow the TIA T568A standard for wiring instruction (see Fig. 4).

## RJ-45 Jacks

Phone and data lines are wired according to the TIA T568A standard



## Wiring a 110 connector

1. Strip 2" of cable jacket.
2. Untwist about 0.5" wire and keep jack close to 110 connector.
3. According to the color code, only use a 110 punch down tool to push the wire between the contact blades. Or wire may be damaged when using other tools.

Fig.3

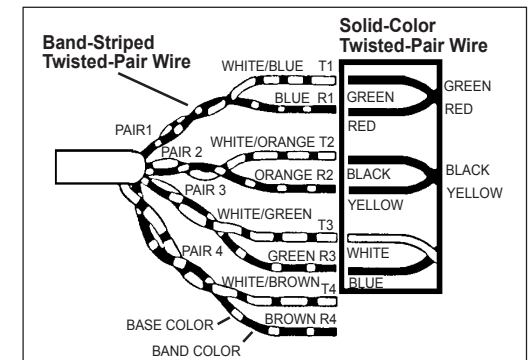


Fig.4